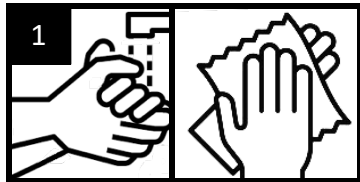


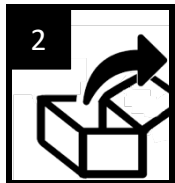
This test is used to detect the antigen of the SARS-CoV-2 virus and is very easy and convenient to use. The evaluation of the test takes 15 minutes. An infection with SARS-CoV-2 virus that has already been overcome cannot be detected with this test.

According to the usability study, this test can be safely used by **adults and children aged 11 and more**.

TEST PROCEDURE for self testing and home use

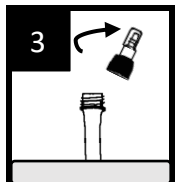


1 Wash and dry hands thoroughly.

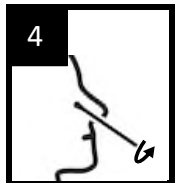


2 Unpack test accessories and place on a clean surface.

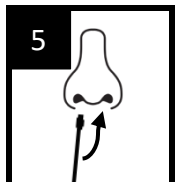
NOTE: To perform the test a stop watch or timer is needed (not included in the test kit).



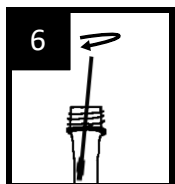
3 Place buffer tube in the tube holder and remove screw cap resp. pull off seal foil.



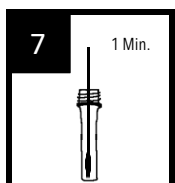
4 Unpack swab and carefully insert the swab about 2 cm into one nostril. Rotate swab 5 to 10 times against the nasal wall.



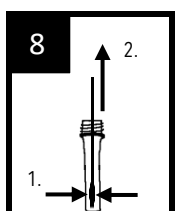
5 Carefully withdraw swab from the nostril and repeat procedure with the same swab in the other nostril.



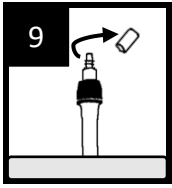
6 Insert sample swab into the buffer tube and rotate the swab at least 6 times. Press head of the swab against the inside and the bottom of the tube.



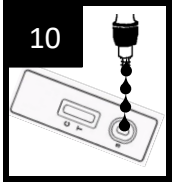
7 Leave swab in the buffer tube for 1 minute.



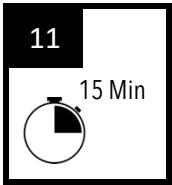
8 Squeeze the tube with the fingertips to expel as much buffer solution from the swab as possible. Withdraw swab and place it in the disposal bag.



Close buffer tube with the screw cap and remove the screw cover of the dropper tip.



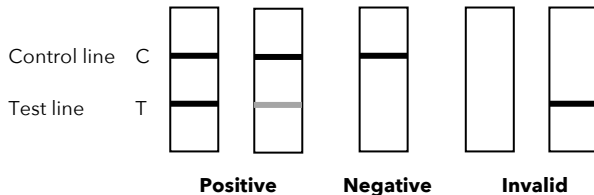
Remove the test cassette from the foil pouch and place it on a flat and clean surface. Apply 4 drops of sample solution to the sample well of the cassette.



Start stop watch or timer and read test result after **15 Minuten**.

IMPORTANT: Do not read the result after 20 minutes.

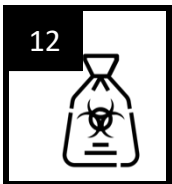
Result:



For a valid test result a red line must be detectable in the control region C.

Red lines in control and test region: test result **positive**

Red line in control region, no line in test region: test result **negative**



Pack test cassette, closed buffer tube and swab in the disposal bag and dispose off in the household garbage.

DEALING WITH THE TEST RESULT:

If the test result is POSITIVE, a current COVID-19 infection is suspected. Please contact your family doctor or local health department immediately and follow local guideline for self-isolation. Have a PCR test performed to confirm the result.

If the test result is NEGATIVE, continue to observe all applicable rules regarding contacts and comply with protective measures. A test is always a snapshot only and cannot generally rule out the presence of SARS-CoV-2 viruses.

In case of suspect, repeat the test after 1 or 2 days.

If the test result is INVALID, repeat the test and carefully follow the description of the test procedure. If the result of the repeated test is still invalid, contact a doctor or COVID-19 test center.